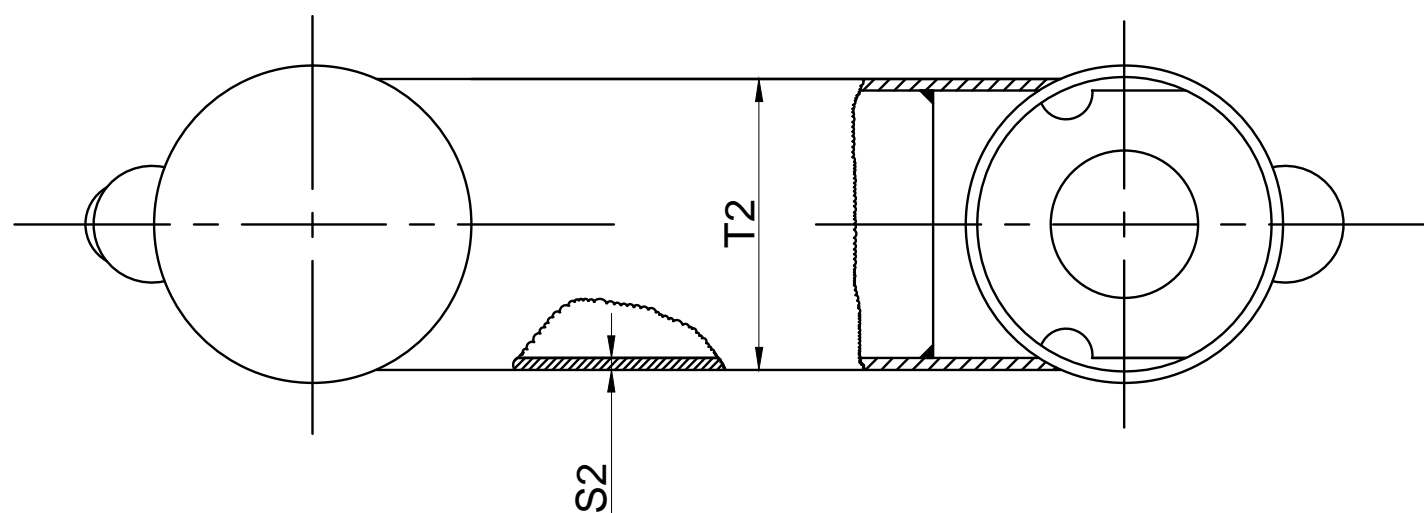
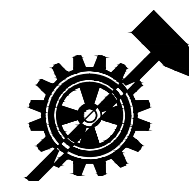


Information & specification	
Standards:	DIN 82607
Material:	S355 (EN 10025) St52-3 (DIN 17100)
Finishing:	shotblasted, 2-component shop primer other: on request



Product	nom. trek	L	T	H	E	D1	D2	T2	H2	H3	H4	S2	gew.
naam	kracht (kN)	mm	mm	mm	mm	mm	mm	mm	mm	mm	mm	mm	kg
DB-1	10	650	160	370	430	139,7x6,3	160	130	105	130	55	5	22
DB-2	20	800	245	475	570	219,1x8,0	245	180	115	150	55	6	42
DB-3	30	1093	300	570	700	232,9x10,0	300	200	135	180	55	8	105
DB-5	50	1344	355	670	880	273,0x10,0	355	250	150	210	55	8	170
DB-8	80	1566	390	780	1050	355,6x14,2	390	330	175	250	55	10	265
DB-12	120	1837	490	860	1200	457,0x16,0	490	420	195	285	55	16	465
DB-20	200	2058	545	970	1350	508,0x17,5	545	470	230	345	55	16	615
DB-32	320	2179	600	1000	1400	559,0x20,0	600	530	270	415	55	16	765



Schutte Metaal b.v.

Ampereweg 3 9503 GS Stadskanaal
telefoon 0599 620644 telfax 0599 617138

Drawingnumber:		Rev
DB. STD.		-
Format	Drawn : S.R.	
A3,	Date : 24-3-2014	
	Scale : n.v.t	